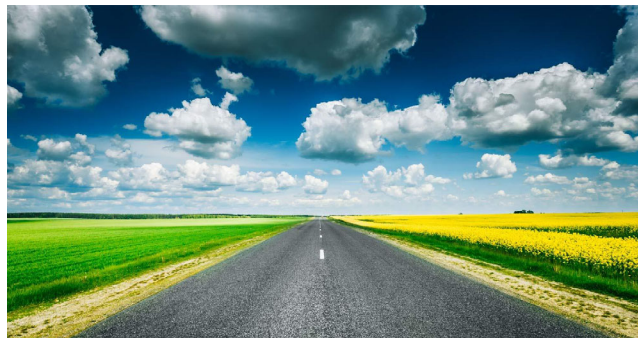


IDEALEASE

SCHOOLS ARE LETTING OUT, PROCEED WITH CAUTION!



With Spring already here, many of us are looking forward to spending more time outdoors. Many schools will be letting out in the next couple of weeks. There will be many children going to and from, and participating in, outdoor activities throughout the day. Adults, too, are taking advantage of the longer daylight hours, so let us all commit ourselves to stay alert and safe. Here are some safety tips for drivers I urge you to follow:

- The last week of school is an exciting time for children, and they may become preoccupied and forget the rules of the road. Use extra caution when driving through school zones.
- During those last few days of school, be aware that kids may arrive or leave school at different times throughout the day.
- Remember that playground speed limits remain in effect year-round. Observe carefully when driving around playgrounds and parks. Small children are less predictable and harder to see than adults.
- Watch for clues, a hockey net or ball in the road or on the sidewalk can mean kids are playing nearby. Pay attention and constantly anticipate the unexpected.
- Always watch for small children as you're backing up. Walk around your vehicle to ensure no kids or pets are behind it.

- As you make your deliveries you will see children that would normally be in schools on bikes, skateboards, walking, etc. in parking lots, shopping centers, and crossing streets.

Preventing a Single Vehicle Accident!



A single-vehicle accident is any driving mishap where only one vehicle is involved. This can include veering off the road and hitting a tree, a rollover crash, or damage caused by animals or debris on the road. Bad weather, poor visibility, and distracted driving can all be contributing factors, so drivers must be alert when they take the wheel. Advances in technology can be both positive and negative when we discuss distracted driving.

Now is a good time to remind your drivers of the following tips:

- **Prepare for your trip before you turn the key.** Many things can slow you down en route to your destination, so it pays to spend some thoughtful preparation time to help ensure safe travels
- **Check the weather report.** If you cross county or state lines, you may experience changes in weather patterns. Be prepared to handle rain, snow, or other conditions that may affect your ability to drive
- **Start safely.** Get familiar with the vehicle controls and adjust any settings, as needed. These include seat position, mirrors, and steering wheel. Also, always keep your seat belt fastened while driving
- **Allow more time to travel.** This will reduce your urge to speed up if you are slowed by unpredictable circumstances
- **Turn your headlights on.** Not only does it enhance your vision, but it also helps others to see you
- **Stay focused to help avoid distractions.** Distracted driving can rob your ability to react quickly. Stay focused on the road, including what you can see in front of you and in your mirrors.

Prepare for anticipated distractions like money for a toll booth, mealtimes, or the need to reach for sunglasses. Refrain from eating, drinking, and smoking while driving whenever possible.

- **Monitor your surroundings.** As you drive, be mindful of lane changes, traffic signs, and signals, curves, road work, and pedestrians. Seeing a situation develop early will give you more time to react, if necessary.
- **Turn off your cell phone.** Operating a CMV with a NON-Hands-free cell phone is a federal and in most states a violation. Even a phone that is on sitting on the passenger seat can be a distraction as it emits sounds and vibrations distracting the driver's attention. Approximately five seconds is the average time your eyes are off the road while texting. When traveling at 55 mph, that's like driving the length of a football field blindfolded
- **Take a break.** If you're feeling drowsy or have a task that cannot wait, pull the vehicle over to a safe spot out of the way of traffic.
- **Monitor conditions to reduce the risk of losing control.** A safe driver monitors road conditions constantly and is ready to make adjustments. Knowing how to handle your vehicle in a variety of situations helps reduce the risk that you'll be involved in an accident.
- **Note how road materials affect traction.** Asphalt can be more slippery than concrete or gravel due to its petroleum content, especially when covered with rain or snow.
- **Be especially careful on sharp curves and steep inclines.** These conditions make vehicle handling more difficult. Also, be wary of the dangers caused by soft shoulders and potholes.
- **Slow down.** Driving at speeds above the posted limits makes it easier to lose control of your vehicle, harder to recover, and robs you of critical reaction time.
- **Beware of standing water and wet leaves.** Maintaining moderate speeds is especially important in these conditions, as it helps to avoid braking fast and skidding.
- And....**Get plenty of Sleep**



May is Motorcycle Safety Awareness Month

Motorist awareness is an important component of the National Highway Traffic Safety Administration's comprehensive motorcycle safety program. Over two-thirds of fatal motorcycle crashes involve a motorcycle and another vehicle. The motorist either does not see the oncoming motorcycle at all or does not see the motorcycle in time to avoid a crash. It is important for motorists to know that their actions affect the safety of motorcyclists. A motorist and a motorcyclist may take

different actions in the same driving or highway situation. For example, a motorist may ignore a piece of road debris; however, that same piece of road debris may be deadly for a motorcyclist.



Click it or Ticket!

National Seat Belt Enforcement Mobilization

May 23 - June 5, 2022

Seat belts have been proven to be one of the best ways to save your life in a crash. Yet many still do not buckle up. Worse still, not wearing a seat belt is a habit that will pass on to impressionable youth who, in turn, will think it is safe to not buckle up. The Click It or Ticket campaign focuses on safety education, strong laws, and law enforcement support to save lives. <https://www.nhtsa.gov/campaign/click-it-or-ticket> (<https://www.nhtsa.gov/campaign/click-it-or-ticket>)

24/7 ROADSIDE ASSISTANCE
CALL 1-800-435-3273

IDEALEASE, INC.

430 North Rand Road, North Barrington, IL 60010 | **847-304-6000** |