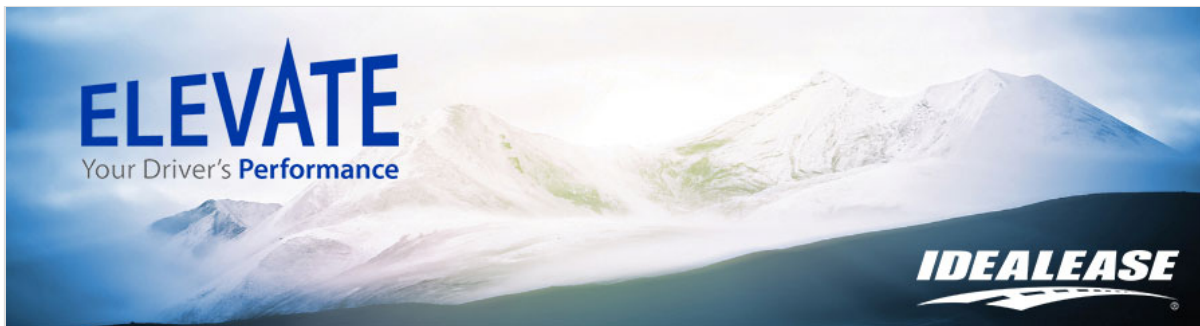
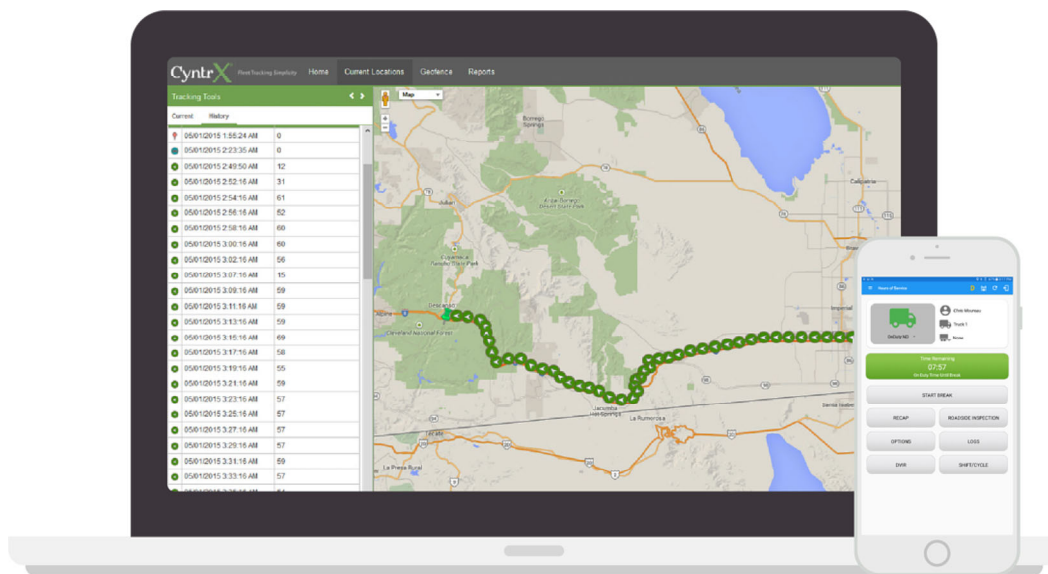


This Week: How Am I Getting High Minute Idle Events?

9/18/2019



How Am I Getting High Minute Idle Events?



Q: As I understand it, my vehicles have an Idle Shutdown Timer. If this engine parameter is set at 5 minutes, how is it that when I look at idle detail reporting, I have events that show idle in one spot for much higher than 5-minute increments?

A: If a driver leaves the vehicle running and exits the vehicle, it will shut off at the predetermined setting, assuming it is within the ambient temperature guidelines for Idle Shutdown Timer to engage. (Standard Ambient Temp override is 30 degrees Fahrenheit and 81 degrees Fahrenheit).

If a driver remains inside the vehicle, after 4 minutes, a dash light will come on to signify the engine is getting ready to shut off. At 4:30, it will start to flash or chime. If the driver notices, he can reset by hitting the brake or



accelerator. This is how higher idle events show up even though there is a 5-minute setting.

Also, there may have been a request to disengage the Idle Shutdown Timer on certain vehicles by a manager or a driver. If you are unsure, please contact your Idealease location to confirm on certain units.

Idealease is committed to helping your team Elevate their Performance. You will receive a weekly Question or Tip of the Week explaining different elements of the scorecard, tips to improve Key Performance Indicators (KPI's), or other motivational topics to keep the team (s) striving for excellence behind the wheel. If you have a question or would like a topic covered, please email jerryring@idealease.com.



Mailing Address:
430 North Rand Road
North Barrington, IL 60010



Copyright © 2019, All rights reserved.

ELEVATE: QUESTION/TIP OF THE WEEK SIGNUP

Email *

First Name *

Last Name *

Job Title *

Company *

SUBMIT

[Click Here To Register](#)

[update subscription preferences](#)

Is this email not displaying correctly?

[View it in your browser.](#)