

In This Issue:
Heat and Your Truck
Have you prepared your terminal facility for the long 4th of July holiday weekend?
Idealease / NPTC Safety Seminar Registration
Independence Day Holiday
FMCSA grants states military CDL waiver

Is this email not displaying correctly?
[View it in your browser](#)



SAFETY BULLETIN



July 1, 2016

Brought to you by Idealsafe
847-304-3190

www.idealease.com

Due to the 4th of July Holiday being observed next week your next Idealease Safety Bulletin will be sent to you Friday, July 15th

Heat and Your Truck

Two weeks ago I discussed the precautions that your drivers must take from the heat of the summer. In order for drivers to operate a commercial motor vehicle (CMV) in a safe manner they also need to understand how heat affects the operation of the CMV. Two areas that drivers must pay attention during their inspections are the engine coolant and the tires!

Engine Coolant!!!

Approximately 7 years ago the OEM truck manufacturers introduced extended life coolant (ELC) into the industry! With each EPA change the operating temperature of the engine has increased 10 to 15 degrees. It is estimated that 50% of all engine failures are associated with an overheat condition of the engine.



Register Now for the 2016 Idealease / NPTC Safety Seminar

Idealease and the National Private Truck Council NPTC will again be hosting safety seminars in 2016. The one day seminar this year will focus on the new Electronic Logging Device

With today's emission systems an engine running low on coolant runs the risk of damage the emission components such as the exhaust gas recirculation or EGR.

The benefit of using ELC is the fact that you can improve the engine's heat transfer rate by 12 to 13 percent over conventional anti-freeze.

During the pre-post trip inspection driver should:

1. Make sure that the coolant level is within range of the marking on the side of the coolant reservoir.
2. If the coolant level is low contact your Idealease service provider immediately for direction. ELC coolant should be a red/orange color and should be free of dirt, debris, rust and other contaminants. Do **NOT** ELC with mixed conventional anti-freeze!
3. If when operating a CMV a dash light comes on with an overheat warning immediately pull the unit into a safe parking place and contact your Idealease service provider for direction. Operating the unit in an overheat situation can severely damage the engine.

Tires

During the summer season, when the ambient temperatures can get well over 100° F, and some road temperatures can reach almost 200° F, the heat problems caused by under inflation are more extreme. Tires that are run under inflated will be more prone to failure in these temperatures.

A very famous tire engineer once stated, "**Heat is to tires as Kryponite is to Superman**"... in other words, it's worst enemy.

Taken all together, hot summer temperatures, under inflated tires, heavy loads, and traveling at high speeds (not that this ever happens), and you have a recipe for tire disaster.... that's exactly why you see more alligators on the highway in the summer season.

What can drivers do to minimize tire related issues during the summertime months?

1. Tire pressures need to be checked more frequently in the summer.
2. Tire pressures need to be checked when the tire is "cold" and not after operation. Pressures can increase during operation when "hot" by as much a 15% giving you a false reading.
3. Inspect tires for punctures and damage during pre-post trip inspections and stops. Tire punctures tend to increase during the summer because the tread rubber becomes hotter and "softer" and acts as a magnet to nails and road debris.

Immediately report to your Idealease service provider tire conditions that need attention.

Have you prepared your terminal facility for the long 4th of July holiday weekend?

It is not uncommon for thieves to target truck terminals and truck dealerships over the holidays. Thieves know that holiday weekends are a good opportunity for a successful theft as the possibility exists for no one to be at your facility. Make sure that you take

(ELD) regulation, basic safety and compliance, regulation changes and CSA. In addition, this year attendees will receive the mandatory two hour Drug and Alcohol supervisor training as part of the seminar. The seminars and will be provided to all Idealease customers, potential customers and NPTC members at no charge. The seminar provides important information applicable for both the novice and experienced transportation professionals.

[Click Here](#) to register

2016 Idealease Safety Seminar Schedule:

September 20	Lafayette, IN
September 21	Santa Fe Springs, CA
September 22	Santa Barbara, CA
October 4	Green Bay, WI
October 4	Erie, PA
October 5	Butler, PA
October 5	Columbia, SC - NEW!
October 6	Cleveland, OH
October 12	Chicago, IL

extra precaution to secure the trucks and items of value at your facility. If your units do not have anti-siphon devices or locking caps, instruct the drivers not to fill the units at the end of the day.

Make sure that all security alarms and cameras are in working order. Walk the perimeter of the lot to make sure that security fencing are in good condition. Move units and all other material such as pallets, tires, etc far enough away from the fence so they cannot be used to climb on to get over the fence. Review your security lighting to make sure it is operational and adequate. Lighting can be obstructed by vehicles or trees allowing a thief a place to be unseen.

Consider blocking the entrance and exits to the lot so units cannot be stolen. Throughout the three day weekend assign management personnel to check the terminal randomly. Notify local law enforcement officials of your hours of operation over the holidays so they know when to expect activity at your location.

Using a little prevention and common sense can deter a thief from striking your facility and disrupting your business!

As we enjoy grilling with family and an extra day off this July 4th weekend, cargo thieves will be seeking to get rich by stealing truckloads of nonalcoholic beverages, major appliances, and copper.

During 2012 to 2015, CargoNet analyzed cargo theft data in the United States and Canada from July 2 to July 9 and noted that those were some of the most popular theft categories. Cargo theft has always spiked during holiday weekends, but we expect a particularly bad July 4th since it falls on Monday. Many truckers will park their trucks on Thursday or Friday and will not check on them again until Tuesday.

In total, 119 incidents were reported during this time period. Eighty-one (81) of those incidents involved cargo theft. Food and beverage items were the most stolen items during this period, with 20 thefts. Cargo thieves also targeted household goods (15 thefts) and electronics (11 thefts). In 2014, thieves aggressively targeted metals, and CargoNet recorded six thefts of copper, steel, aluminum, and brass, but there was just one theft of metals in 2015. Additionally, in this reporting period, 70 semitractors and 64 semitrailers were reported stolen. Incidents were reported mostly in California (21), Texas (19), Florida (15), and Georgia (15). In total, CargoNet estimates \$10.63 million in losses during this reporting period, but aside from 2013, each reporting period resulted in \$2 million to \$2.6 million in losses.

Truckers can protect their trucks and freight by avoiding high-theft metropolitan areas such as Los Angeles, Dallas-Fort Worth, Atlanta, and Miami and by parking in high-security locations with security services, secure fences, and high-visibility lighting.

Noteworthy thefts from previous July 4th weekends

\$2,000,000 of cell phones from Miami, FL

\$1,300,000 of apparel and accessories from Newport, TN

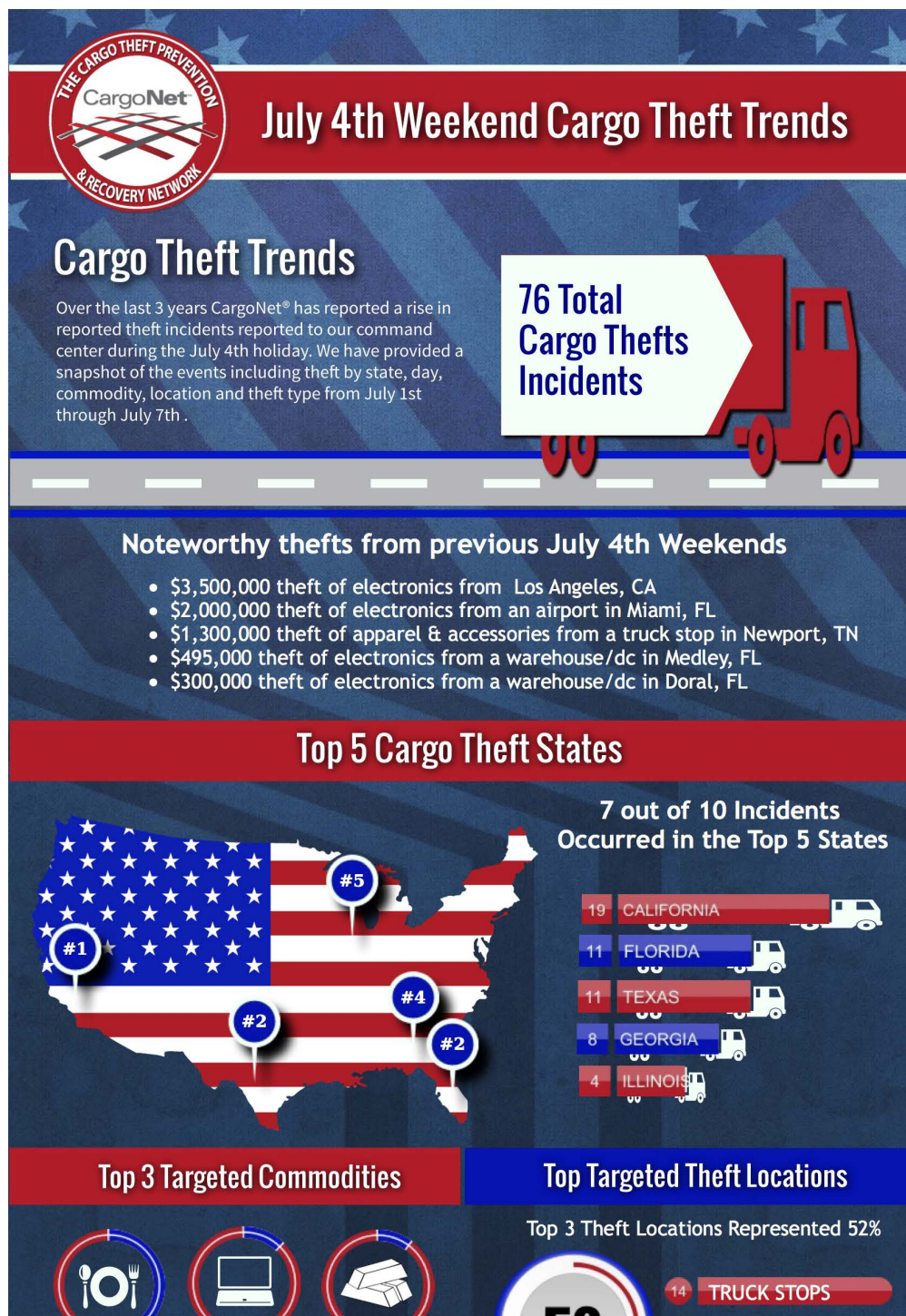
\$659,090 in cash and other valuable items from San Angelo, TX

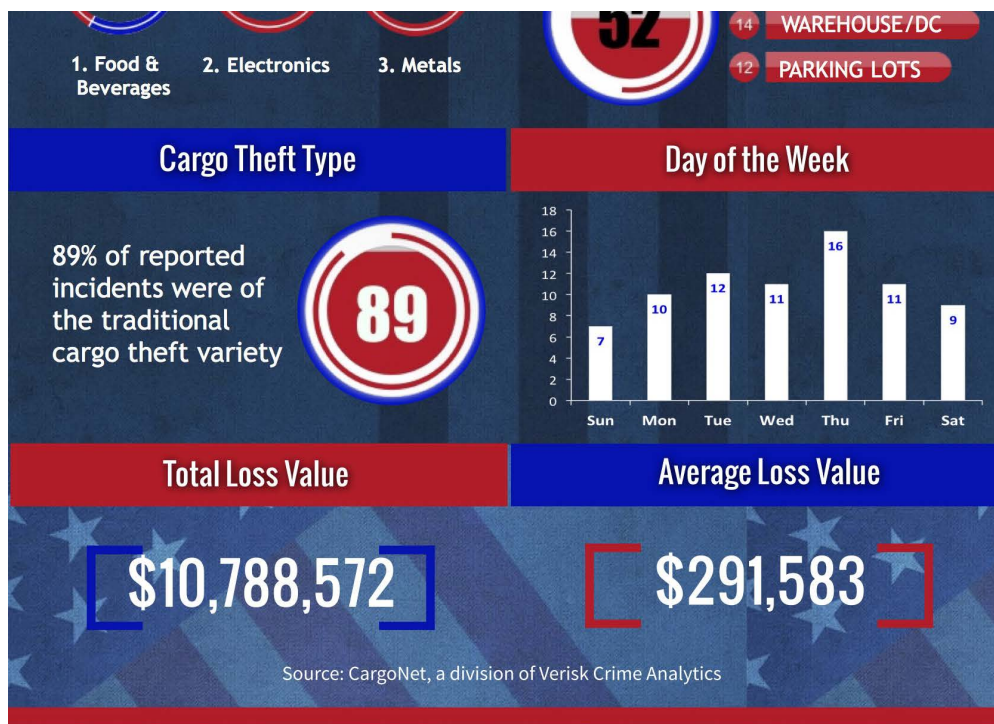
\$500,000 in electronics from Carnesville, GA

\$495,210 in televisions and other displays from Medley, FL

Here are a few tips if you have to keep cargo inside of trailers over the holiday weekend:

- Use all available security equipment to secure trailers while they are being staged. King Pin Locks and landing gear locks are recommended, with high-security locks on the cargo doors. The tractor and trailer should remain locked and connected the entire weekend.
- Stage loads at secure company yards whenever possible. According to FreightWatch, 86% of reported cargo thefts occur in unsecured parking areas.
- Install covert tracking systems on all shipments and monitor the location of all loads left staged over the weekend.





Independence Day Holiday

During this Independence Day weekend, please take a moment to honor America and all that we are. Also, remember our military servicemen and women who are protecting our freedom across the globe and fighting for those who do not have the liberty our great country provides. Let us never forget those who have sacrificed before us to protect the United States and the values we hold dear.

FMCSA grants states military CDL waiver

The Federal Motor Carrier Safety Administration (FMCSA) announced its decision to grant the Missouri Department of Revenue (DOR) and all other state driver licensing agencies (SDLAs) a limited exemption from the Agency's commercial driver's license (CDL) regulations.

These regulations allow a state to waive the CDL skills test for applicants regularly employed or previously employed within the last 90 days in a military position requiring operation of a commercial motor vehicle (CMV). The exemption extends the 90-day timeline to one year following the driver's separation from military service. The Missouri DOR believed that the 90-day timeframe is too short to take advantage of the waiver for many of the qualified discharged veterans entering and settling into civilian life.

FMCSA has analyzed the Missouri DOR exemption application and the public comments and has determined that the exemption will achieve a level of safety that is equivalent to, or greater than, the level that would be achieved absent such exemption.

The exemption is effective July 8, 2016, through July 8, 2018.

A similar exemption was granted to the Commonwealth of Virginia, Department of Motor Vehicles and all SDLAs on July 8, 2014, effective through July 8, 2016.

The Idealease Safety Bulletin is provided for Idealease affiliates and their customers and is not to be construed as a complete or exhaustive source of compliance or safety information. The Idealease Safety Bulletin is advisory in nature and does not warrant, guarantee, or otherwise certify compliance with laws, regulations, requirements, or guidelines of any local, state, or Federal agency and/or governing body, or industry standards.

Copyright © 2016 , All rights reserved.

Our mailing address is:
430 North Rand Road
North Barrington, IL 60010