

In this Issue:
 DOT Drug and Alcohol Clearinghouse Registration is NOW OPEN
 When a Fire Occurs in a CMV the Driver Must Know 2 Things
 Got Chains?

Is this email not displaying correctly?
[View it in your browser.](#)

Upcoming Events:
 October 7th – 13th is Fire Prevention Week
 Register Now to Attend an Idealease/NPTC Safety Seminar this Fall!
 Sign Up for Elevate Your Driver's Performance Question/Tip of the Week!



DOT Drug and Alcohol Clearinghouse Registration is NOW OPEN!



October 4th, 2019



The [CDL Drug and Alcohol Clearinghouse](#) portal is now accepting stakeholder registrations in advance of the website's launch on January 6, 2020.

Motor carriers, medical review officers, substance abuse professionals, and consortium/third-party administrators must create an account to submit information to the portal. Motor carriers will need an account to perform the required investigations of drivers via the clearinghouse, and drivers may need an account depending on the type of query.

Submitting of Data

Once implemented, employers and their service agents must populate the clearinghouse with:

- Their employees' DOT drug and alcohol violations under Part 382, and
- Verification of a CDL driver's completed steps in the DOT return-to-duty process.



A clearinghouse account is necessary to provide these data elements.

Employer Queries of the System



Effective January 6, 2020, motor carriers must request clearinghouse queries on applicants and existing CDL drivers. This task also requires the motor carrier have an active portal account. A driver may need an account.

UPCOMING EVENTS

October 7th – 13th is Fire Prevention Week

National Fire Prevention Week is coming, and it is a good time to review with your drivers how to prevent fires and how to react to a fire that occurs in their commercial motor vehicle.



Fire extinguisher inspection is a vital part of a driver's daily vehicle inspection process. It amazes me how many times I will be looking at a truck and find the fire extinguisher has lost its pressure due to a leak or was used and returned to the truck without being recharged. The actions of a driver at the time of a fire are crucial in saving lives and controlling the amount of loss.

Register Now to Attend an Idealease/NPTC Safety Seminar this Fall!



The clearinghouse has driver privacy built into its rulemaking. A motor carrier must have permission to request a driver's DOT drug and alcohol history. The medium for consent differs based on the report type being provided.

A limited query is performed annually on existing drivers. The limited query simply alerts a motor carrier whether the driver has information in the database. Drivers sign a general consent of the motor carrier's making that is outside of the clearinghouse. Motor carriers may ask drivers to sign a consent that will work for more than one year, provided the release has an end date.

If a current driver has data in the clearinghouse, the employer must request a full query, which includes detailed information on the violation and any completed steps in the return-to-duty process. Motor carriers must also perform a full query as a part of the pre-employment process on new hires.

Due to the sensitive nature of the full query, the driver must have a portal account to electronically provide authorization. As a result, all applicants need a portal account, while existing drivers would only need one if a full query is necessary.

If a driver refuses to give permission to access his or her clearinghouse record (limited or full query), he or she cannot perform a safety-sensitive function.

Join us at a safety seminar in August, September or October to hear the latest updates on regulations and compliance.

[Click Here to Sign Up](#) for a seminar near you!

Idealease and the National Private Truck Council NPTC will again be hosting safety seminars in 2019. The one-day seminar this year will focus on new safety technologies available on trucks today, basic safety and compliance, regulation changes and CSA. The seminars and will be provided to all Idealease customers, potential customers and NPTC members at no charge.

The seminar provides important information applicable for both the novice and experienced transportation professionals.

When a Fire Occurs in a Commercial Motor Vehicle the Driver Must Know Two Things:

1. Knowledge about fires
2. How to operate a fire extinguisher

Fire safety and fire extinguisher operation should be part of every new driver's orientation program.



The Federal Motor Carrier Safety regulations require that all commercial motor vehicles have a fire extinguisher on board that is of the correct size, type and properly secured and labeled. Did you know that a CMV with hazardous materials is required to have a different size extinguisher than those not carrying hazardous material?

Here are the requirements:



\$393.95 Emergency equipment on all power units. Each truck, truck tractor, and bus (except those towed in driveway-towaway operations) must be equipped as follows:

- (a) Fire Extinguishers
- (a)(1) Minimum ratings:

- A power unit that is used to transport hazardous materials in a quantity that requires placarding must be equipped with a fire extinguisher having an Underwriters' Laboratories rating of 10 B:C or more.
- A power unit that is not used to transport hazardous materials must be equipped with either:
- A fire extinguisher having an Underwriters' Laboratories rating of 5 B:C or more.
- Labeling and marking. Each fire extinguisher required by this section must be labeled or marked by the manufacturer with its Underwriters' Laboratories rating.
- Visual Indicators. The fire extinguisher must be designed, constructed, and maintained to permit visual determination of whether it is fully charged.
- Condition, location, and mounting. The fire extinguisher(s) must be filled and



FALL SEMINARS

10/8/2019	Chicago, IL
10/8/2019	Everett, WA
10/9/2019	Eugene, OR
10/15/2019	Reno, NV
10/22/2019	Salt Lake City, UT
10/23/2019	Lexington, KY
10/23/2019	Modesto/Turlock, CA

located so that it is readily accessible for use. The extinguisher(s) must be securely mounted to prevent sliding, rolling, or vertical movement relative to the motor vehicle.

When a fire occurs in a Commercial Motor Vehicle the driver should take the following actions:

1. Get the truck off of the roadway and into an open area if possible. Park away from buildings, trees, vehicles or anything else that may catch fire.
2. Call 911 on your cell phone to report the fire and location.
3. If the fire is already to a size that cannot be extinguished get away from the truck. Your life and the life of the general public is your first responsibility.
4. If you are operating a tractor trailer and can safely disconnect the trailer from the tractor do so as not to damage both units and cargo in the fire.
5. If the engine is on fire turn off the engine as soon as possible.
6. Do not open the hood if possible and try to extinguish the fire from the louvers, radiator or underside of the truck. Opening the hood will provide additional oxygen to fire and it will increase at a more rapid rate.
7. If the fire is in your trailer or cargo box of the truck keep the doors shut. Here again additional oxygen will increase the intensity of the fire.
8. A tire fire will not likely be extinguished with a fire extinguisher. Try throwing dirt or sand on the tire to smother the fire.



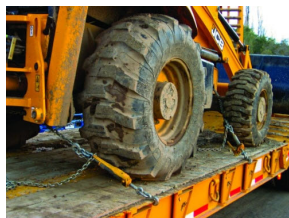
What you can do to prevent the likelihood of a fire starting in your Commercial Motor Vehicle:

1. Complete a thorough pre and post trip inspection daily of the fuel, electrical, exhausts systems, tires and cargo of your truck.
2. Keep the unit clean from excess grease, fuel and oil.
3. Monitor your dash gauges while in operation for signs of overheating.
4. Utilize your mirrors for signs of smoke or flames.
5. With new Post Emission 2007 and newer units be aware of regeneration of the after treatment program and where the regeneration occurs as exhaust temperatures reach high levels of heat.



Know the cargo that you have on board and its fire potential.

Got Chains?



If you are operating in a state that requires chains to be on board, make sure the chains are the correct size, properly secured, clean, and not broken as to be easily applied when necessary.

[Find your local state chain laws here.](#)

[Click Here to register](#) your employees for the Safety Bulletin; you can even view the archives of past bulletins [here!](#)

Sign Up for the Elevate Your Driver's Performance Question/Tip of the Week

You'll receive short weekly questions/tips to keep your team striving for Excellence behind the wheel, covering (but not limited to) the various following topics:

- Key Performance Indicators (KPIs)
- Safety
- Scorecarding
- Driver performance
- Motivation
- Incentives

ELEVATE: QUESTION/TIP OF THE WEEK SIGNUP

Email *

First Name *

Last Name *

Job Title *

Company *

[follow on Instagram](#) | [follow on Twitter](#) | [friend on Facebook](#) | [follow on LinkedIn](#) | [follow on Vimeo](#)

The Idealease Safety Bulletin is provided for Idealease affiliates and their customers and is not to be construed as a complete or exhaustive source of compliance or safety information. The Idealease Safety Bulletin is advisory in nature and does not warrant, guarantee, or otherwise certify compliance with laws, regulations, requirements, or guidelines of any local, state, or Federal agency and/or governing body, or industry standards.

Copyright © 2019, All rights reserved.

Our mailing address is:
430 North Rand Road
North Barrington, IL 60010

[update subscription preferences](#)