

**In This Issue:**

How to Conduct Yourself if Pulled Over by a Law Enforcement Official  
When you have a citation in your hand, what are your options?  
Register for the 2017 Idealease/NPTC Safety Seminars!  
Do's and Don'ts when an Emergency Vehicle is approaching  
Canada Releases Draft for Technical ELD Standard  
April is National Distracted Driver Month  
CVSA's 2017 International Roadcheck Enforcement Event to Take Place June 6-8

Is this email not displaying correctly?  
[View it in your browser](#)



## SAFETY BULLETIN



# How to Conduct Yourself if Pulled Over by a Law Enforcement Official

*The flashing lights of a police car in a rear view mirror fill many drivers with dread. "Am I really being pulled over?" you might wonder. Although no one likes being pulled over, it's essential to show a law enforcement officer that you're cooperating.*

From the moment those lights come on, the officer is observing your behavior, and the way you respond may affect whether or not you receive a ticket. So as soon as you see those flashing lights behind you, turn on your right turn signal and pull over to the right as quickly -- but also as safely -- as possible. It is important to make sure that you are able to pull over in a place that is safe, flat and solid. Again, it's important to show the officer that you're cooperating, and by stopping safely as near where the violation occurred, you may have a better sense of what happened. You will also be able to make observations about the area that can help you if you contest the ticket, such as noting an obstructed speed limit sign or that a new yield sign is in place.

Once you have safely pulled over, turn off the engine, roll down your window all the way and place your hands on the steering wheel. Do not get out of the truck unless asked by the officer. If it's dark, turn on the interior lights in your truck. Don't make any sudden movements, and don't rummage through your belongings looking for your wallet until you are asked for documentation. Remember that law enforcement officers are killed every year while conducting routine traffic stops, so it's understandable that an officer may treat you with suspicion. Respond accordingly by being cooperative and do not give any cause for alarm.

It's OK to greet the officer, but it's wise to wait for the officer to ask you a question.



April 7, 2017

Brought to you by Idealsafe  
847-304-3190  
[www.idealease.com](http://www.idealease.com)



Idealease and the National Private Truck Council NPTC will again be hosting safety seminars in 2017. The one day seminar this year will focus on the new Electronic Logging Device (ELD) regulation, basic safety and compliance, regulation changes and CSA. The seminars and will be provided to all Idealease customers, potential customers and NPTC members at no charge. The seminar provides important information applicable for both the novice and experienced transportation professionals. To register for an upcoming

He or she will likely ask for your driver's license, medical certificate, logbook and vehicle registration. It's important to give the officer these documents when asked and not question why. However, if you are pulled over by an unmarked car or aren't sure if the person is a police officer, it's acceptable to wait to roll down your window until the person has identified himself or herself as an officer.

When talking with the officer, don't admit any guilt. It's acceptable to give simple yes or no answers to questions. If an officer decides to give you a ticket, his or her mind is already made up, and it's very unlikely you'll be able to argue your way out of it. Anything you say could later be used in court, should you choose to contest the ticket, so be mindful of what you say. Never try to bribe the officer -- this is not only highly unethical but it is also a crime.

During a traffic stop, an officer can only search your truck if there's probable cause to believe you're concealing something illegal or if he or she believes that you are dangerous. Before approaching a motorist, he or she has pulled over, an officer usually looks for movement by the driver, such as one shoulder dipping down, something that would indicate that the driver is attempting to hide something underneath a seat or in a compartment.

If an officer asks you to get out of your truck, it's once again important to cooperate. Once you are out of the truck, the officer may pat you down, and if anything illegal or suspicious is found, he or she may then search your truck. If your truck becomes impounded, it can also be legally searched then.

An officer might ask you to sign your ticket, but depending on state law, you may not have to. Signing a ticket is not an admission of guilt. It just means that you agree to pay the fine or to appear in court.

## When you have a citation in your hand, what are your options?

**Guilty Plea:** You could just pay it which is a guilty plea and go on down the road unless the judge demands you show up in court.

**Not-Guilty Plea:** You could plead not guilty and get a court date, where you could return to the court and defend yourself.

**Ignore the Citation:** You could just ignore it and hope it goes away. This is NOT recommended as the law enforcement will eventually catch up with you and suspend your license and fines will be increased with penalties.

What about the citation received during an inspection where the officer writing the citation is judge, jury and executioner?

In that situation you can do a DataQ Challenge, but you will need to provide all the documentation you can as well as present your case. Know the regulations as this will help you determine if you have a chance in fighting the



seminar in 2017 click on the following link:

<http://www2.idealease.com/e/36492/safety-seminar-registration/5bqydq/562813063>

## Idealease 2017 Safety Seminar Schedule

Date	Location
April 12	Memphis, TN
April 12	Lodi, CA
April 13	Birmingham, AL
April 18	Chattanooga, TN
April 19	Atlanta, GA
April 20	Tampa, FL
April 25	Youngstown, OH
April 26	Weirton, WV
May 3	Grand Rapids, MI
May 4	Fort Wayne, IN
May 4	Aurora, CO
May 9	Ontario, Canada
May 10	Greensboro, NC
May 17	San Leandro, CA
May 18	Los Angeles, CA
September 12	Santa Rosa, CA
October 3	Charlottesville, VA
October 4	Erie, PA

violation. Whenever possible cite regulation to substantiate your position.. If you can convince the officer he made a mistake, then he will remove or reduce the citation and the points on your CSA.

There is a driver shortage out there right now; however a lot of that shortage is caused because carriers refuse to hire drivers with too many points on the CDL or CSA. You should do a DataQ Challenge on any inspection you receive where the officer puts points on your CSA that you are in disagreement with.

Go to: <http://www2.idealease.com/e/36492/login-asp/5bqyd6/562813063>

Always follow the law and be a safe driver, but if the time comes when you do receive a citation, be smart about the steps you take afterward and it could save you money and your career.



## An Emergency Vehicle is approaching

### DO...

Pull to the nearest edge of the roadway and come to a complete stop until all emergency vehicles have passed.

Be alert to the approach of more than one emergency vehicle. Be sure to check your rearview mirror before pulling back on the travel lane.

Keep the volume of your radio to a level that will not interfere with your ability to hear approaching emergency vehicles.

Use your turn signal when pulling off the road. This sends a message to the emergency vehicle operator that you are aware of his presence.

### DON'T...

Block any intersection. Blocking intersections, even when attempting to yield to an emergency vehicle is dangerous.

Follow an emergency vehicle responding to an emergency closer than 500 feet. It's against the law!

Stop on a bridge, curve or crest of a hill, instead, activate your turn signal and proceed forward until you can safely pull over and come to a complete stop.

Slam on your brakes or stop directly in front of an emergency vehicle. Large trucks require more stopping distance than a passenger car. Stopping abruptly in front of any large vehicle can have deadly consequences.

---

## Canada Releases Draft for Technical ELD Standard

The Canadian Council of Motor Transport Administrators (CCMTA) ELD Working Group has released an updated draft technical electronic logging device (ELD) standard. The draft technical standard addresses only the operation, functionality, and design of ELDs for use in Canada; the draft standard does not represent an ELD mandate for all motor carriers in Canada.

In 2013, the ELD Working Group created its first draft electronic on-board recording device (EOBR) standard. The standard was a performance-based standard based on the proposed U.S. EOBR rulemaking at that time. However, when the final U.S. electronic logging device rule was adopted in late 2015, the working group found that the U.S. ELD rule did not align with the draft EOBR standard created in 2013. This required the ELD Working Group to solicit stakeholder feedback in 2016 and make significant changes to the 2013 standard to align it with the U.S. ELD final rulemaking.

This newest version of the draft ELD standard still needs to be submitted to CCMTA's Compliance and Regulatory Affairs Committee and CCMTA Board of Directors for final approval.

Transport Canada supports an ELD mandate for extra-provincial commercial motor vehicle drivers in Canada, but has not yet published a proposal which would start the rulemaking process.

### Call to Action!

The Truck Renting and Leasing Association has requested an exemption from the requirement that a motor carrier install and require each of its drivers to use an electronic logging device (ELD) to record the driver's hours-of-service no later than December 18, 2017. [82 Fed. Reg. 14789](#) (March 22, 2017). TRALA requests the exemption for all drivers of property carrying vehicles rented for 30-days or fewer because the ELD mandate will result in unintended technical and operational consequences that will unfairly and adversely affect short-term rental vehicles.

TRALA argues that the exemption, if granted, would not have any adverse impacts on operational safety, as drivers would remain subject to the standard HOS limits and maintain a paper record of duty status (RODS). The term of the requested exemption is 5 years, which may be renewed.

Considering the significant number of different ELD device platforms and subscription options, the notice states that driver's device might not be able to communicate properly with the rental company's telematics platform. TRALA states that while FMCSA recognized these issues presented by a lack of interoperability among ELD systems, and required certain technical specifications in the final rule, the agency did not require full interoperability among ELDs. According to the

TRALA petition, many commenters to the proposed ELD rule raised these same interoperability concerns. However, the rule requires only that ELDs be able to transfer data electronically via either a “telematics” approach capable of wireless web service, or a “local” method capable of Bluetooth and USB 2.0 transfer.

*As a customer of Idealease and you know that the ELD mandate as it stands will present a hardship for you when you rent a unit we would like for you to send a comment to the FMCSA supporting the TRALA petition.*

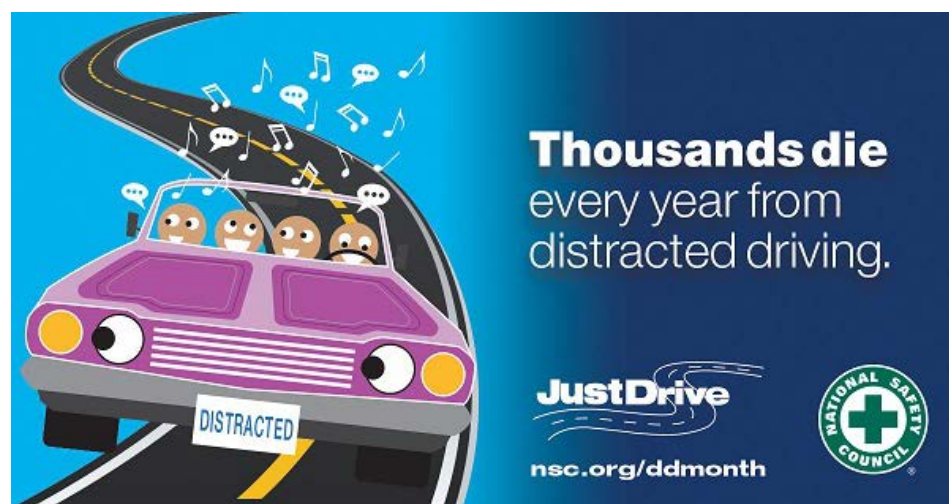
To view the petition as printed in its entirety in the federal register go to:

<http://www2.idealease.com/e/36492/-2017-03-22-pdf-2017-05632-pdf/5bqvd8/562813063>

### **The best way to submit comments is online.**

Go to [www.regulations.gov](http://www.regulations.gov) and put the docket number, “FMCSA–2016–0428” in the “Keyword” box, and click “Search.” When the new screen appears, click on “Comment Now!” button and type your comment into the text box in the following screen. Choose whether you are submitting your comment as an individual or on behalf of a third party and then submit.

**All comments must be submitted by April 21, 2017.**



## **April is National Distracted Driver Month**

### **Banning Distracted Driving: An Employer's Guide to Protect Employees and Liability**

- Implement a clear policy indicating that the employer does not require employees to answer calls while they are on the road. This includes the employer placing calls to employees while they are driving.
- Encourage your employees to plan their trips to include stops so they can safely return calls and emails.
- Establish company policy that makes it unnecessary for employees to text while driving to fulfill their job duties.
- Eliminate any incentives that may encourage employees to text/talk while operating a vehicle.
- Communicate your state's regulations and associated fines to employees.

- Encourage employees to sign an anti-distracted driving pledge.
- Designate company vehicles as "distraction-free zones."

---

## CVSA's 2017 International Roadcheck Enforcement Event to Take Place June 6-8

The Commercial Vehicle Safety Alliance's (CVSA) 30th annual International Roadcheck will take place June 6-8, 2017. Over a 72-hour period, CVSA-certified commercial motor vehicle inspectors in jurisdictions throughout North America will conduct inspections of commercial motor vehicles and their drivers.



[Learn more about International Roadcheck.](#)

---

The Idealease Safety Bulletin is provided for Idealease affiliates and their customers and is not to be construed as a complete or exhaustive source of compliance or safety information. The Idealease Safety Bulletin is advisory in nature and does not warrant, guarantee, or otherwise certify compliance with laws, regulations, requirements, or guidelines of any local, state, or Federal agency and/or governing body, or industry standards.

*Copyright © 2017 , All rights reserved.*

**Our mailing address is:**  
430 North Rand Road  
North Barrington, IL 60010